



ARROWHEAD
R O C K D R I L L
HYDRAULIC HAMMERS, TOOLS & PARTS™

S50

PARTS MANUAL

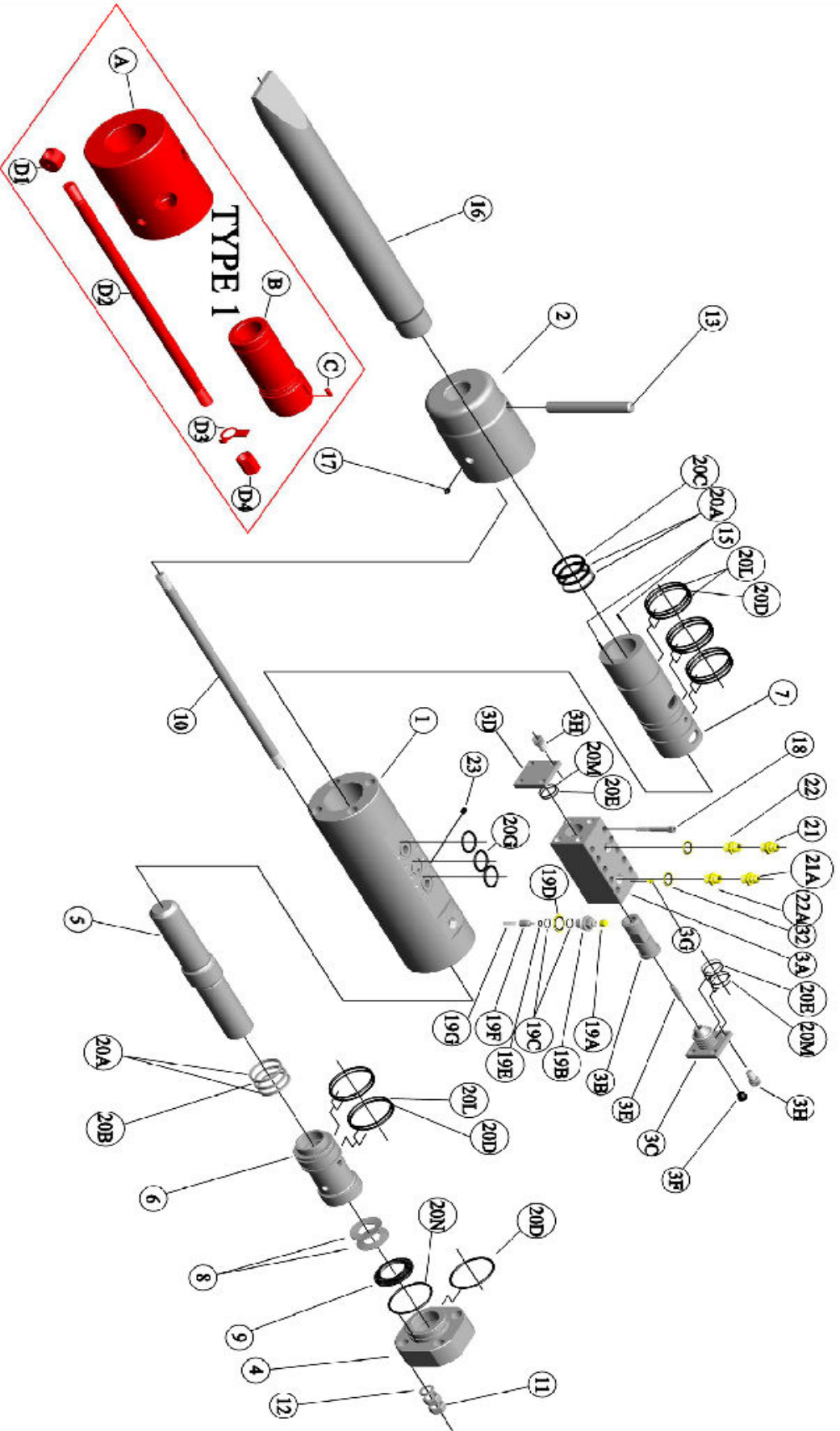
S50 PARTS LIST AND DRAWINGS

Item No.	Part No.	Description	Qty.
1	S50-001	Main Body	1
2	S50-002A	Chuck Housing	1
3	S50-003C	Valve Housing Complete	1
3A	S50-003	Valve Housing (Bare)	1
3B	S50-019	Valve Spool	1
3C	S50-020	Main Valve Top Plate	1
3D	S50-021	Main Valve Bottom Plate	1
3E	S50-029	Plunger	1
3F	ARC-003	18mm Pressure Plug	1
3G	ARC-100	8mm Pressure Plug	1
3H	ARC-051	Socket Head Capscrew (Top & Bottom Valve Plate)	8
4	S50-004	Cylinder Head	1
5	S50-006	Piston	1
6	S50-007	Upper Cylinder Liner	1
7	S50-008	Lower Cylinder Liner	1
8	S50-009	Disc Washers	2
9	S50-010	Spacer	1
10	S50-013A	Tie Rod	4
11	S50-014A	Top Nut	8
12	ARC-069	Tie Rod Washer	4
13	S50-017	Tool Retainer Pin	1
14	ARC-047	1/2" Dowty Seal	2
15	ARC-095	Dowel Pin	2
16A	S50-026P	Tool (Point)	1
16B	S50-026C	Tool (Chisel)	1
17	ARC-005	Grease Nipple	1
18	ARC-052	Socket Head Capscrew (Valve to Main Body)	10
19	ARC-008	Gas Valve Assembly	1
19A	ARC-008A	Gas Valve Dust Cap	1
19B	ARC-008B	Gas Valve Body	1
19C	ARC-008C	"O" Ring	2
19D	ARC-008D	1" Dowty Washer	1
19E	ARC-008E	"O" Ring	1
19F	ARC-008F	Gas Valve Shuttle	1
19G	ARC-008G	Gas Valve Spring	1
20	S50-059	Seal Kit Complete	1
20A	S50-059-1	"U" Seal	4
20B	S50-059-2	"U" Seal Rubber Quad	1
20C	S50-059-3	Wiper Ring	1
20D	S50-059-4	"O" Ring Cylinder Liner & Cylinder Head	6
20E	S50-059-5	"O" Ring Main Valve Top Plate/Bottom Plate	3
20G	S50-059-7	"O" Ring Valve to Main Body	3
20L	S50-059-11	P.T.F.E. Back Up Ring Cylinder Liner	8
20M	S50-059-12	P.T.F.E. Back Up Ring Main Valve Top Plate/Bottom Plate	3
20N	S50-059-13	"O" Ring Cylinder Head to Main Body	1

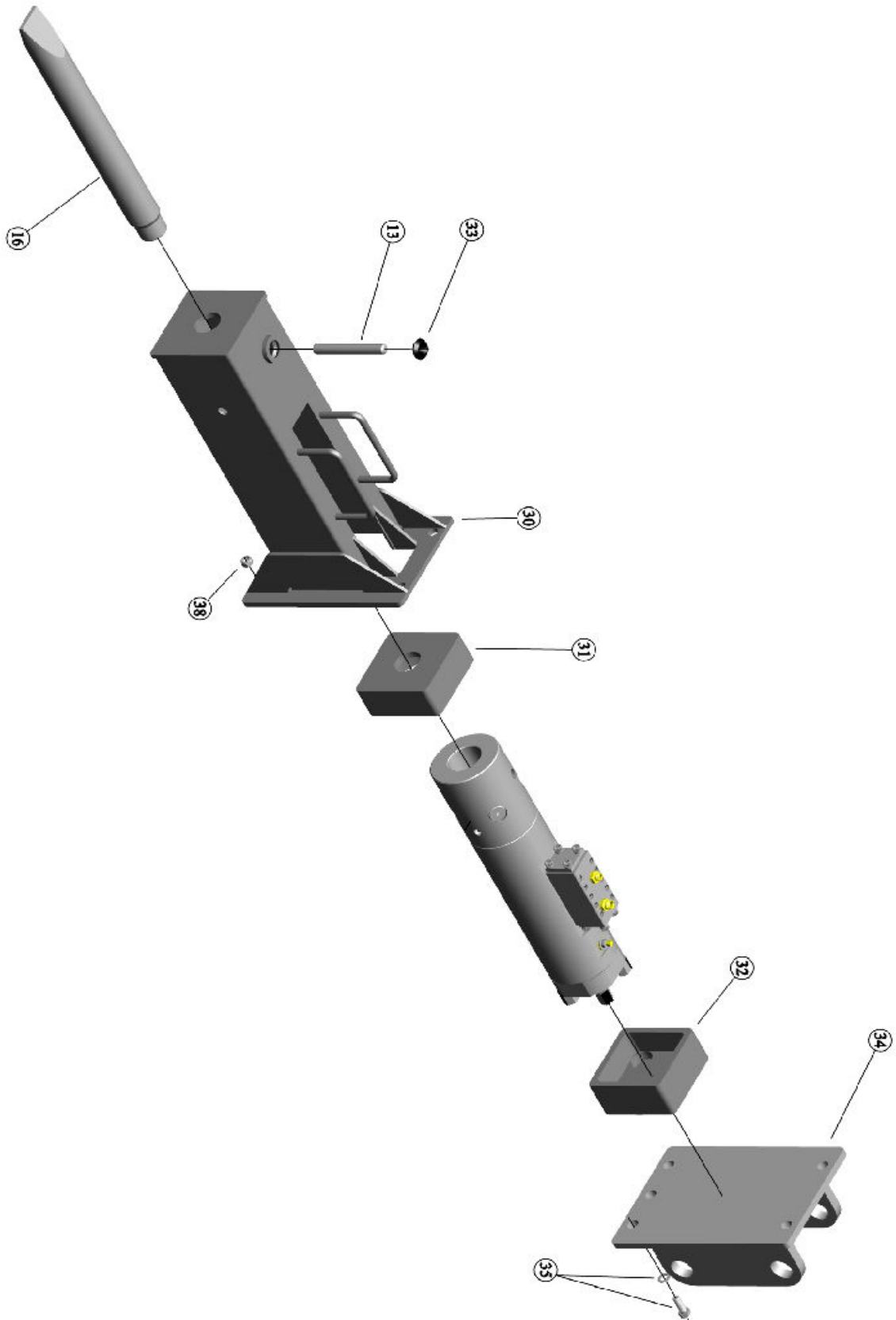
21	ARC-025	Inlet Adaptor 1/2" BSP * 3/4" JIC - 8 Male Couplings	1
21A	ARC-026	Outlet Adaptor 1/2" BSP * 1.1/16 JIC - 12 Male Couplings	1
22	ARC-018	Inlet Adaptor 1/2" X 1/2" BSP Male Couplings	1
22A	ARC-019	Outlet Adaptor 1/2" X 3/4 BSP Male Couplings	1
23	ARC-002	1/4" BSP Plug	1
30	S50-150	Hammer Box	1
31	S50-101	Lower Buffer	1
32	S50-100	Top Buffer	1
33	ARC-010	Rubber Doughnut	1
34	ARC-058	Top Mount Bracket	1
35	ARC-013	Top Bracket Bolt Assembly	5
	ARC-118	Decal Set	1
	ARC-012	Gas Charging Kit	1
	S50-200	Operators/Parts Manual	1
	ARC-041	1/2" Nominal Bore Two Wire Hose with 3/4" JIC - 8 Fittings 2400mm	1
	ARC-042	3/4" Nominal Bore Two Wire Hose with 1.1/16" JIC - 12 Fittings 2400mm	1
	ARC-034	1/2" Nominal Bore Two Wire Hose with 1/2" BSP Fittings 2400mm	1
	ARC-035	3/4" Nominal Bore Two Wire Hose with 3/4" BSP Fittings 2400mm	1

Item No.	Part No.	TYPE 1	
A	N/A	Item A has been replaced with Item No2 /S50-002A Chuck Housing Complete. Item No2 part No; S50-002A has Item No's; B & C as integral parts * When fitting Item No2 /S50-002A to a Type 1 hammer new tie rod assemblies must be used- part no's S50-013A Tie Rod & S50-014A Top Nut	
B	N/A	Combo Bush	1
C	N/A	Dowel Pin	1
D1	N/A	Bottom Nut	4
D2	N/A	Tie Rod	4
D3	N/A	Tie Rod Washer	4
D4	N/A	Top Nut	4

S50 HAMMER



S50 HAMMER



GAS VALVE ASSEMBLY

