



ARROWHEAD
R O C K D R I L L
HYDRAULIC HAMMERS, TOOLS & PARTS™

S30

PARTS MANUAL

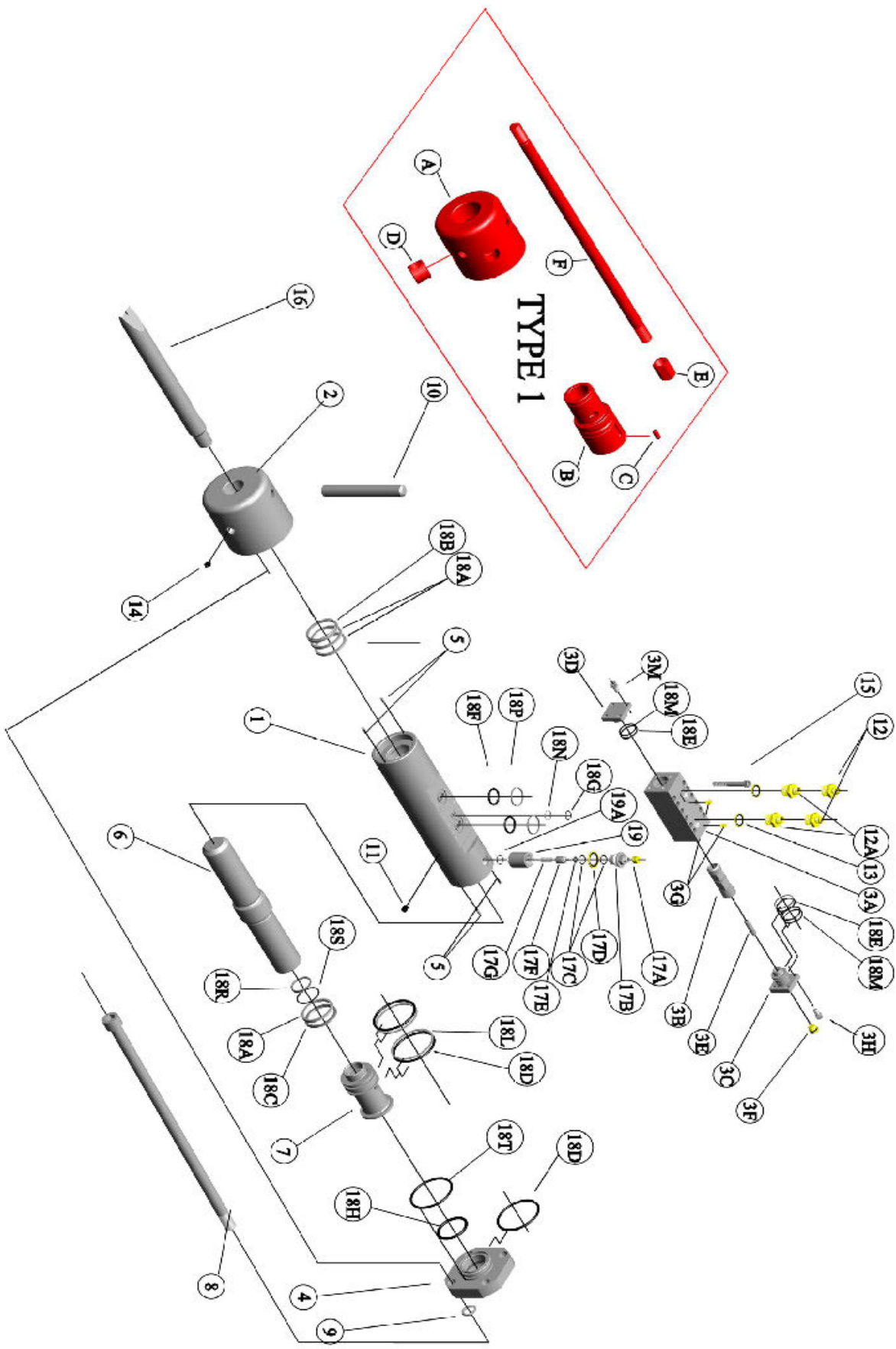
S30 PARTS LIST AND DRAWINGS

Item No.	Part No.	Description	Qty.
1	S30-001	Main Body	1
2	S30-002A	Chuck Housing	1
3	S30-003C	Valve Housing Complete	1
3A	S30-003	Valve Housing (Bare)	1
3B	S30-019	Valve Spool	1
3C	S30-020	Main Valve Top Plate	1
3D	S30-021	Main Valve Bottom Plate	1
3E	S30-029	Plunger	1
3F	ARC-003	18mm Pressure Plug	1
3G	ARC-100	8mm Pressure Plug	2
3H	ARC-053	Socket Head Capscrew (Top & Bottom Valve Plate)	8
4	S30-004	Cylinder Head	1
5	ARC-050	Dowel Pin	4
6	S30-006	Piston	1
7	S30-007	Upper Cylinder Liner	1
8	S30-013A	Tie Rod	4
9	ARC-062	Tie Rod Washer	4
10	S30-017	Tool Retainer Pin	1
11	ARC-061	M8 Plug	1
12	ARC-025	Inlet / Outlet Adaptor 1/2" BSP X 3/4 JIC - 8 Male Couplings	2
12A	ARC-018	Inlet / Outlet Adaptor 1/2" X 1/2" BSP Male Couplings	2
13	ARC-047	1/2" Dowty Seal	2
14	ARC-005	Grease Nipple	1
15	ARC-054	Socket Head Capscrew (Valve to Main Body)	12
16A	S30-026P	Tool (Point)	1
16B	S30-026C	Tool (Chisel)	1
17	ARC-008	Gas Valve Assembly	1
17A	ARC-008A	Gas Valve Dust Cap	1
17B	ARC-008B	Gas Valve Body	1
17C	ARC-008C	"O" Ring	2
17D	ARC-008D	1" Dowty Washer	1
17E	ARC-008E	"O" Ring	1
17F	ARC-008F	Gas Valve Shuttle	1
17G	ARC-008G	Gas Valve Spring	1
18	S30-059	Seal Kit Complete	1
18A	S30-059-1	"U" Seal	3
18B	S30-059-2	Wiper Ring	1
18C	S30-059-3	Quad Seal	1
18D	S30-059-4	"O" Ring Cylinder Head & Upper Cylinder Liner	3
18E	S30-059-5	"O" Ring Valve Top & Bottom Plate	3

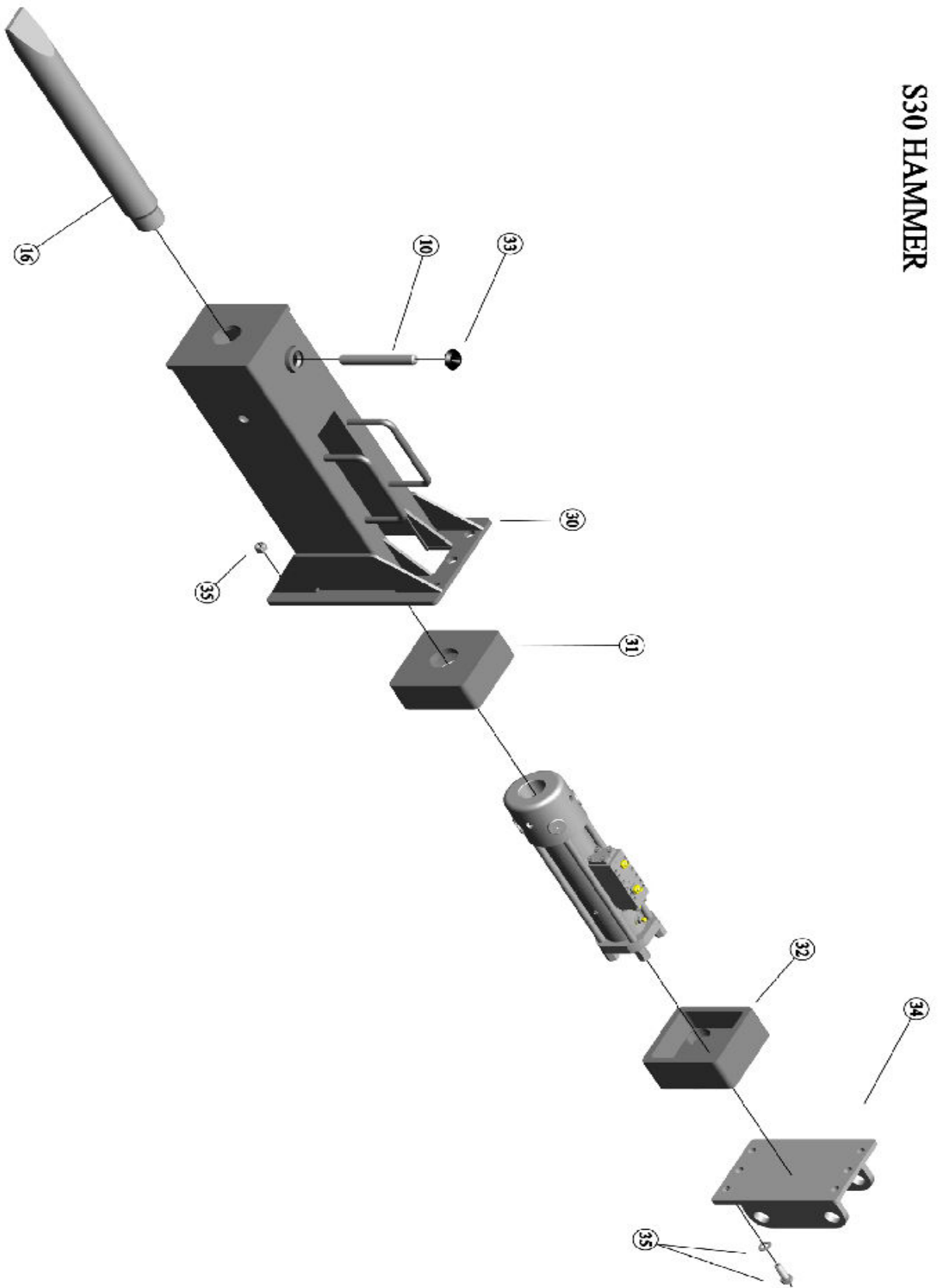
18F	S30-059-6	"O" Ring Valve to Body	2
18G	S30-059-7	"O" Ring Valve to Body	1
18H	S30-059-8	"O" Ring Cylinder Head to Upper Cylinder Liner Cushion	1
18L	S30-059-11	P.T.F.E. Back Up Ring Upper Cylinder Liner	2
18M	S30-059-12	P.T.F.E. Back Up Ring Valve Top & Bottom Plate	3
18N	S30-059-13	P.T.F.E. Back Up Ring Valve to Body	1
18P	S30-059-14	P.T.F.E. Back Up Ring Valve to Body	2
18R	S30-059-15	Composite Seal Upper Cylinder Liner	1
18S	S30-059-16	"O" Ring for Composite Seal Upper Cylinder Liner	1
18T	S30-059-17	"O" Ring Cylinder Head to Main Body Face Seal	1
19	ARC-008H	Gas Valve Adaptor	1
19A	ARC-008J	Gas Valve Adaptor "O" Ring	1
30	S30-150	Hammer Box	1
31	S30-101	Lower Buffer	1
32	S30-100	Top Buffer	1
33	ARC-010	Rubber Doughnut	1
34	ARC-057	Top Mount Bracket	1
35	ARC-014	Top Bracket Bolt Assembly	6
	ARC-116	Decal Set	1
	ARC-012	Gas Charging Kit	1
	S30-200	Operators/Parts Manual	1
	ARC-040	1/2"Nominal Bore Two Wire Hose with 3/4" JIC - 8 Fittings 1800mm	2
	ARC-033	1/2"Nominal Bore Two Wire Hose with 1/2" BSP Fittings 1800mm	2

Item No.	Part No.	TYPE 1
A	N/A	Item A has been replaced with Item No2 /S30-002A Chuck Housing Complete. Item No2 part No; S30-002A has Item No's; B & C as integral parts * When fitting Item No2 /S30-002A to a Type 1 hammer ,new tie rod assemblies must be used- part no S30-013A Tie Rod
B	N/A	Combo Bush
C	N/A	Dowel Pin
D	N/A	Bottom Nut
E	N/A	Top Nut
F	N/A	Tie Rod

S30 HAMMER



S30 HAMMER



GAS VALVE ASSEMBLY

