



ARROWHEAD
R O C K D R I L L
HYDRAULIC HAMMERS, TOOLS & PARTS™

S10

PARTS MANUAL

S10 PARTS LIST AND DRAWINGS

Item No.	Part No.	Description	Qty.
1	S10-001	Main Body Upper	1
2	S10-002	Chuck Housing	1
3	S10-003C	Valve Housing Complete	1
3A	S10-003	Valve Housing (Bare)	1
3B	S10-019	Valve Spool	1
3C	S10-020	Main Valve Top Plate	1
3D	S10-021	Main Valve Bottom Plate	1
3E	S10-029	Plunger	1
3F	ARC-003	18mm Pressure Plug	1
3G	ARC-100	8mm Pressure Plug	2
3H	ARC-053	Socket Head Capscrew (Top & Bottom Valve Plate)	8
4	S10-004	Cylinder Head	1
5	ARC-064	Dowel Pin	4
6	S10-006	Piston	1
7	S10-001A	Main Body Lower	1
8	S10-013	Tie Rod	4
9	ARC-063A	Tie Rod Washer	4
10	S10-017	Tool Retainer Pin	1
11	ARC-061	M8 Plug	1
12	ARC-025	Inlet / Outlet Adaptor 1/2" BSP X 3/4 JIC - 8 Male Couplings	2
12A	ARC-018	Inlet / Outlet Adaptor 1/2" X 1/2" BSP Male Couplings	2
13	ARC-047	1/2" Dowty Seal	2
14	ARC-005	Grease Nipple	1
15	ARC-054	Socket Head Capscrew (Valve to Main Body)	12
16A	S10-026P	Tool (Point)	1
16B	S10-026C	Tool (Chisel)	1
17	ARC-008	Gas Valve Assembly	1
17A	ARC-008A	Gas Valve Dust Cap	1
17B	ARC-008B	Gas Valve Body	1
17C	ARC-008C	"O" Ring	2
17D	ARC-008D	1" Dowty Washer	1
17E	ARC-008E	"O" Ring	1
17F	ARC-008F	Gas Valve Shuttle	1
17G	ARC-008G	Gas Valve Spring	1
18	S10-059	Seal Kit Complete	1
18A	S10-059-1	"U" Seal	3
18B	S10-059-2	Wiper Ring	1
18C	S10-059-3	Rubber Quad Seal	1
18D	S10-059-4	"O" Ring Upper to Lower Body Connection	2
18E	S10-059-5	"O" Ring Upper to Lower Body Face Seal	1
18F	S10-059-6	"O" Ring Valve End Plate	3
18G	S10-059-7	"O" Ring Valve to Body	2
18H	S10-059-8	"O" Ring Valve to Body	1
18L	S10-059-11	"O" Ring Body to Cylinder Head Connection	1
18M	S10-059-12	"O" Ring Body to Cylinder Head Face Seal	1
18N	S10-059-13	P.T.F.E. Back Up Ring Upper to Lower Body Connection	2

18P	S10-059-14	P.T.F.E. Back Up Ring Valve End Plate	3
18R	S10-059-15	P.T.F.E. Back Up Ring Valve to Body	1
18S	S10-059-16	P.T.F.E. Back Up Ring Valve to Body	2
18T	S10-059-17	Composite Seal	1
18V	S10-059-18	Composite Seal "O" Ring	1
19	ARC-008H	Gas Valve Adaptor	1
19A	ARC-008J	"O" Ring	1
30	S10-150	Hammer Box	1
31	S10-101	Lower Buffer	1
32	S10-100	Top Buffer	1
33	ARC-010	Rubber Doughnut	1
34	ARC-057	Top Mount Bracket	1
35	ARC-014	Top Bracket Bolt Assembly	6
	ARC-114	Decal Set	1
	ARC-012	Gas Charging Kit	1
	S10-200	Operators/Parts Manual	1
	ARC-040	1/2"Nominal Bore Two Wire Hose with 3/4" JIC - 8 Fittings 1800mm	2
	ARC-033	1/2"Nominal Bore Two Wire Hose with 1/2" BSP Fittings 1800mm	2

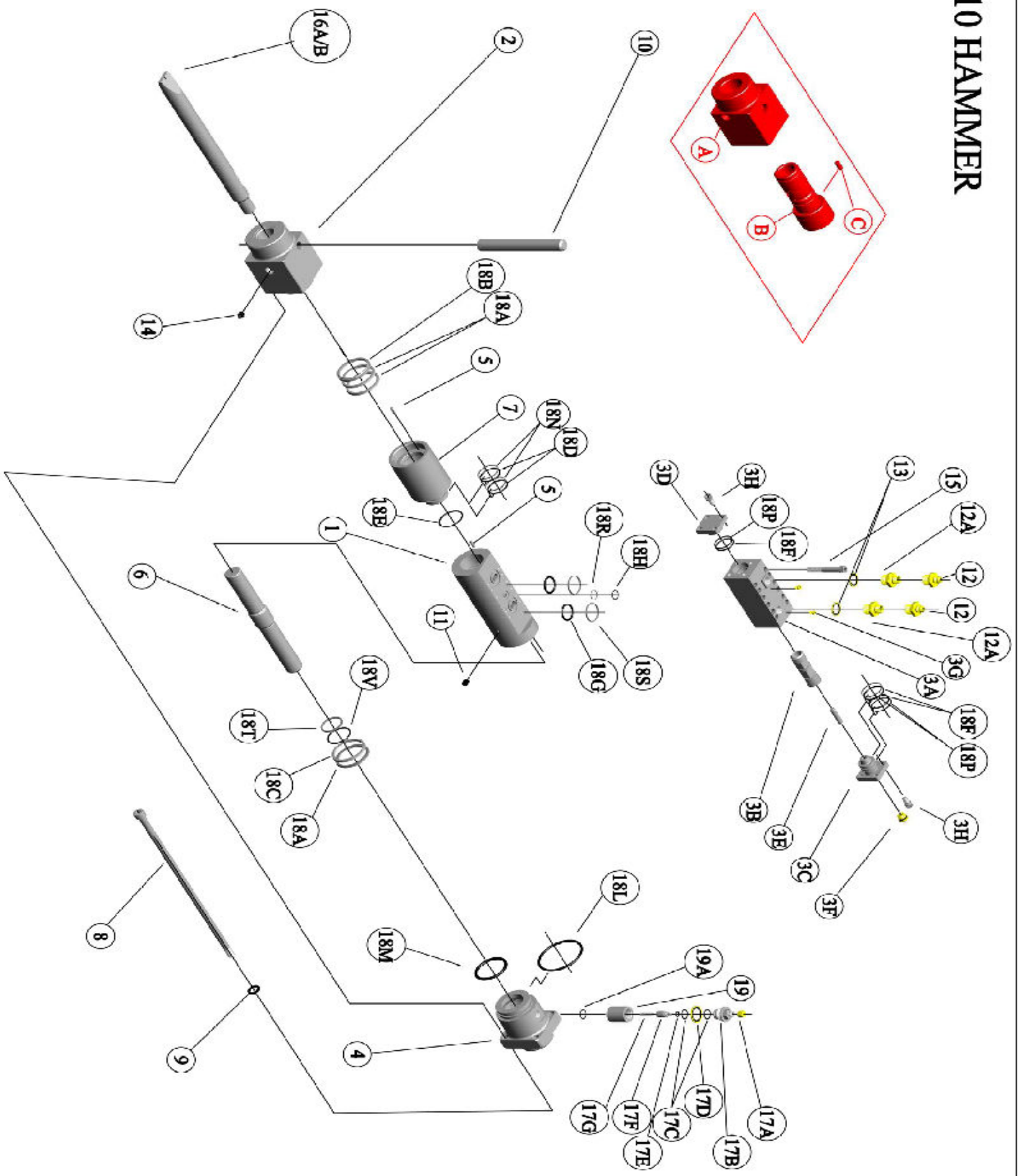
Item No.

Part No.

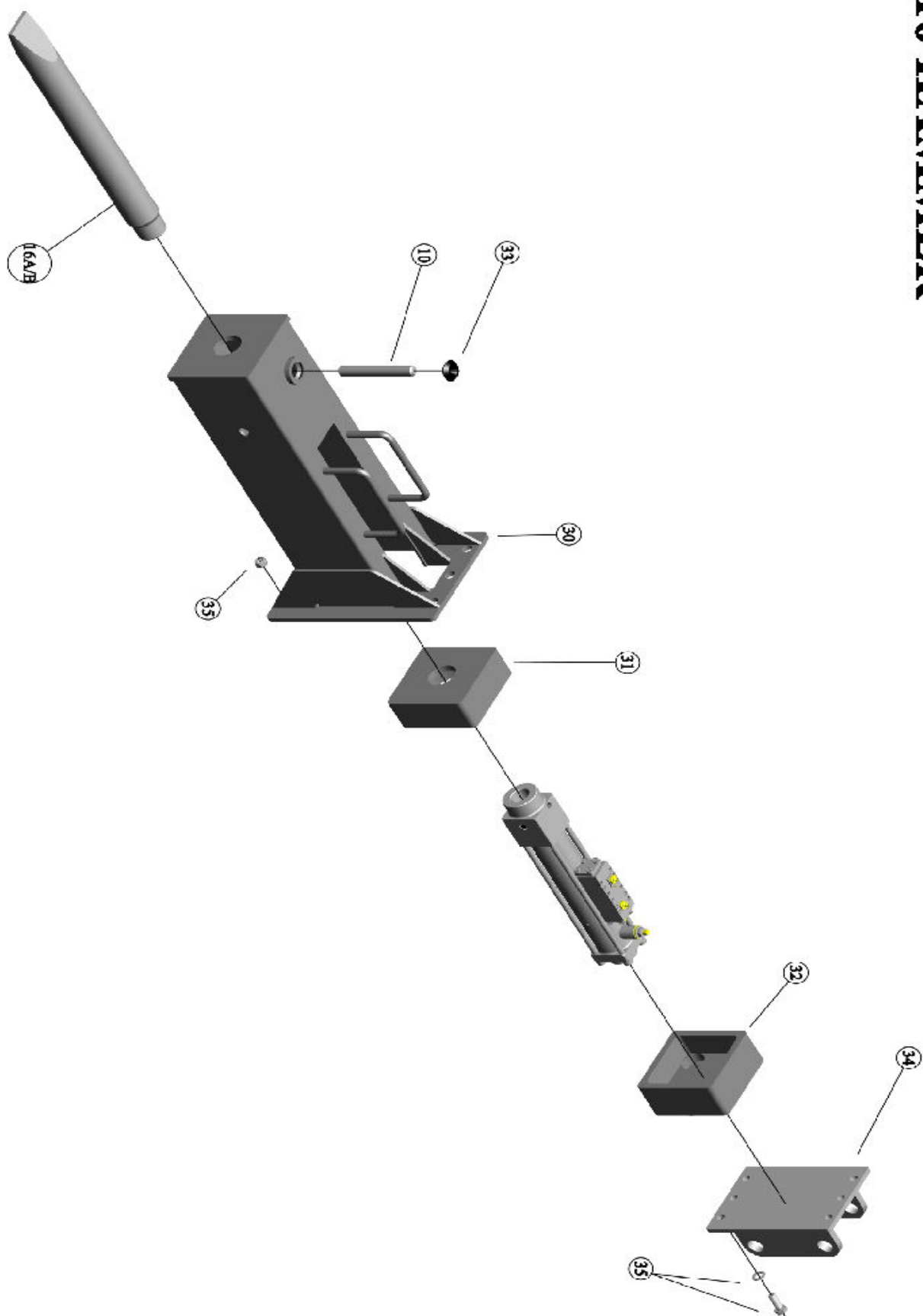
TYPE 1

A	N/A	Items A,B&C have been replaced with item No2 /S10-002A Chuck Housing Complete
B	N/A	
C	N/A	

S10 HAMMER



S10 HAMMER



GAS VALVE ASSEMBLY

