



ARROWHEAD

R O C K D R I L L

HYDRAULIC HAMMERS, TOOLS & PARTS™

S60

PARTS MANUAL

S60 PARTS LIST AND DRAWINGS

Item No.	Part No.	Description	Qty.
1	S60-001	Main Body	1
2	S60-002C	Chuck Housing	1
3	S60-003C	Main Valve Complete	1
3A	S60-003	Valve Housing (Bare)	1
3B	S60-019	Valve Spool	1
3C	S60-020	Main Valve Top Plate	1
3D	S60-021	Main Valve Bottom Plate	1
3E	S60-029	Plunger	1
3F	ARC-003	18mm Pressure Plug	1
3G	ARC-100	8mm Pressure Plug	1
3H	ARC-007	Socket Head Capscrew (Top & Bottom Valve Plate)	8
4	S60-004	Cylinder Head	1
5	S60-006	Piston	1
6	S60-007	Upper Cylinder Liner	1
7	S60-008	Lower Cylinder Liner	1
8	S60-009	Disc Washers	2
9	S60-010	Spacer	1
10	S60-013A	Tie Bolt	4
13	S60-063A	Tie Bolt Washer	4
14	S60-017	Tool Retainer Pin	1
15	ARC-095	Dowel Pin	2
16A	S60-026P	Tool (Point)	1
16B	S60-026C	Tool (Chisel)	1
17	ARC-005	Grease Nipple	1
18	ARC-006	Socket Head Capscrew (Valve to Main Body)	10
19	ARC-008	Gas Valve Assembly	1
19A	ARC-008A	Gas Valve Dust Cap	1
19B	ARC-008B	Gas Valve Body	1
19C	ARC-008C	"O" Ring	2
19D	ARC-008D	1" Dowty Washer	1
19E	ARC-008E	"O" Ring	1
19F	ARC-008F	Gas Valve Shuttle	1
19G	ARC-008G	Gas Valve Spring	1
20	S60-059	Seal Kit Complete	1
20A	S60-059-1	"U" Seal	4
20B	S60-059-2	"U" Seal Rubber Quad	1
20C	S60-059-3	Wiper Ring	1
20D	S60-059-4	"O" Ring Cylinder Liner	7
20E	S60-059-5	"O" Ring Main Valve Top Plate	2
20F	S60-059-6	"O" Ring Main Valve Bottom Plate	1
20G	S60-059-7	"O" Ring Valve to Main Body	1
20H	S60-059-8	"O" Ring Valve to Main Body	2
20J	S60-059-9	"O" Ring Upper Cylinder Liner	1
20K	S60-059-10	P.T.F.E. Back Up Ring Valve to Main Body	2

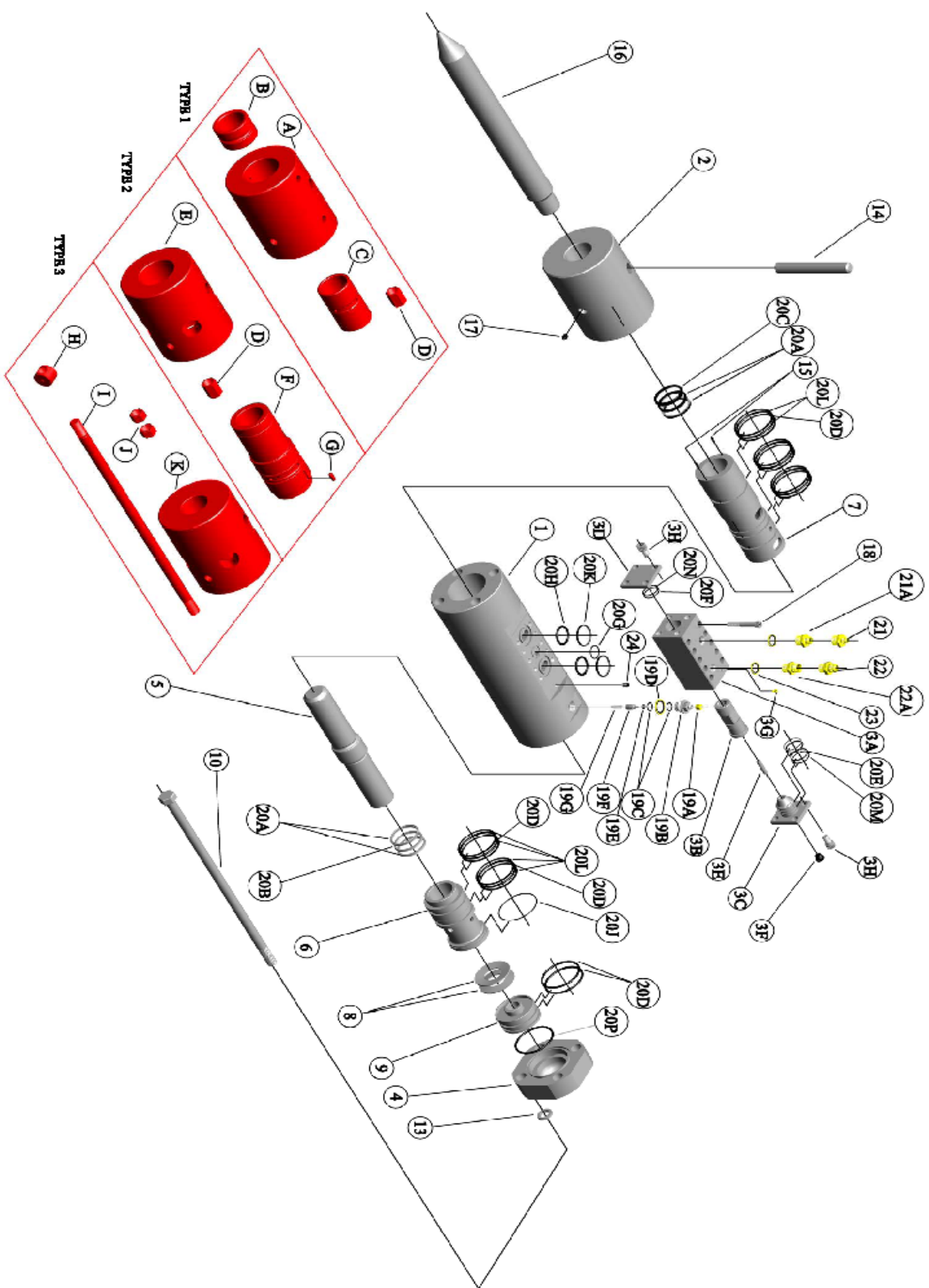
20L	S60-059-11	P.T.F.E. Back Up Ring Cylinder Liner	10
20M	S60-059-12	P.T.F.E. Back Up Ring Main Valve Top Plate	2
20N	S60-059-13	P.T.F.E. Back Up Ring Main Valve Bottom Plate	1
20P	S60-059-14	"O" Ring Cylinder Head to Main Body Face Seal	1
21	ARC-027	Inlet Adaptor 3/4" BSP * 3/4" JIC - 8 Male Couplings	1
21A	ARC-028	Outlet Adaptor 3/4" BSP * 1.1/16 JIC - 12 Male Couplings	1
22	ARC-019	Inlet Adaptor 3/4" X 1/2" BSP Male Couplings	1
22A	ARC-020	Outlet Adaptor 3/4" X 3/4 BSP Male Couplings	1
23	ARC-009	3/4" Dowty Seal	2
24	ARC-002	1/4 "BSP Plug	1
30	S60-150	Hammer Box	1
31	S60-101	Lower Buffer	1
32	S60-100	Top Buffer	1
33	ARC-010	Rubber Doughnut	1
34	ARC-059	Top Bracket	1
35	ARC-013	Top Bracket Bolt Assembly	12
	ARC-119	Decal Set	1
	ARC-012	Gas Charging Kit	1
	S60-200	Operators/Parts Manual	1
	ARC-041	1/2" Nominal Bore Two Wire Hose with 3/4" JIC - 8 Fittings 2400mm	1
	ARC-042	3/4" Nominal Bore Two Wire Hose with 1.1/16" JIC - 12 Fittings 2400mm	1
	ARC-034	1/2" Nominal Bore Two Wire Hose with 1/2" BSP Fittings 2400mm	1
	ARC-035	3/4" Nominal Bore Two Wire Hose with 3/4" BSP Fittings 2400mm	1

Item No.	Part No.	TYPE 1	
A	N/A	Item A has been replaced with Item No2 /S60-002C Chuck Housing Complete. Item No2 part No; S60-002A has Item No's; B, C & L as integral parts. When fitting part No; S60-002C new Tie Bolts part No S60-013A must be used	
B	N/A	Lower Bush	
C	N/A	Thrust Bush	
Tie Rod Assemblies for Type 1 Chuck Housings are available as below			
H	S60-013	Tie Rod	4
D	N/A	Item D has been replaced with Item J 2 Lock Nuts Part No;S60-014A	8
I	S60-015	Bottom Nut	4
13	S60-063A	Tie Rod Washer	4

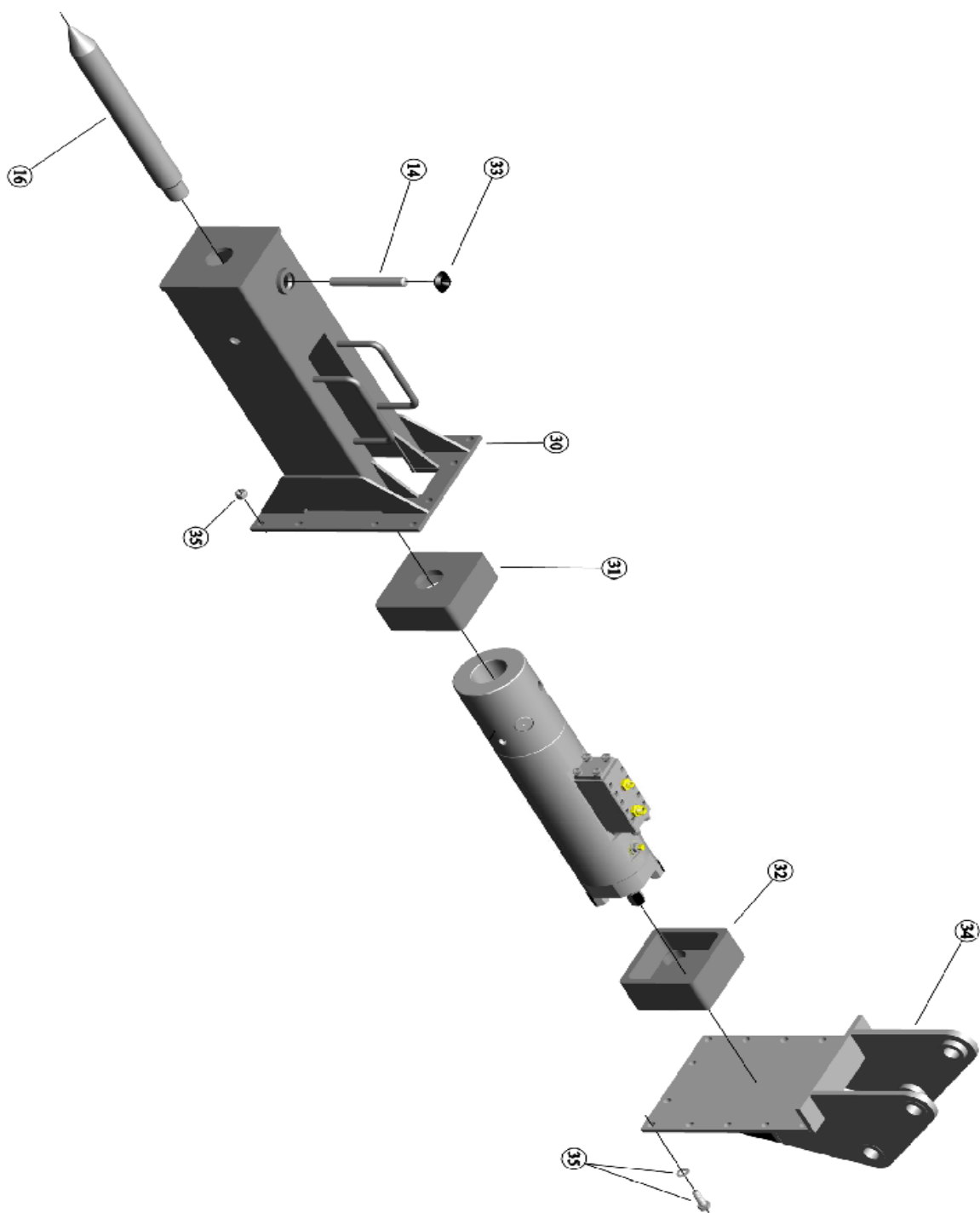
Item No.	Part No.	TYPE 2	
E	N/A	Item E has been replaced with Item No2 /S60-002C Chuck Housing Complete. Item No2 part No; S60-002C has Item No's; F,G & L as integral parts. When fitting part No; S60-002C new Tie Bolts part No S60-013A must be used	
F	N/A	Combination Bush	
G	N/A	Dowel Pin	
Tie Rod Assemblies for Type 2 Chuck Housings are available as below			
H	S60-013	Tie Rod	4
D	N/A	Item D has been replaced with Item J 2 Lock Nuts Part No;S60-014A	8
I	S60-015	Bottom Nut	4
13	S60-063A	Tie Rod Washer	4

Item No.	Part No.	TYPE 3	
K	N/A	Item K has been replaced with Item No2 /S60-002C Chuck Housing Complete. Item No2 part No; S60-002C has Item No L as integral parts. When fitting part No; S60-002C new Tie Bolts part No S60-013A must be used	
Tie Rod Assemblies for Type 3 Chuck Housings are available as below			
H	S60-013	Tie Rod	4
J	S60-014A	Top Lock Nuts	8
I	S60-015	Bottom Nut	4
13	S60-063A	Tie Rod Washer	4

S60 HAMMER



S60 HAMMER



GAS VALVE ASSEMBLY

