



**ARROWHEAD**  
R O C K D R I L L  
HYDRAULIC HAMMERS, TOOLS & PARTS™

**S100**

PARTS MANUAL

# S100 PARTS LIST AND DRAWINGS

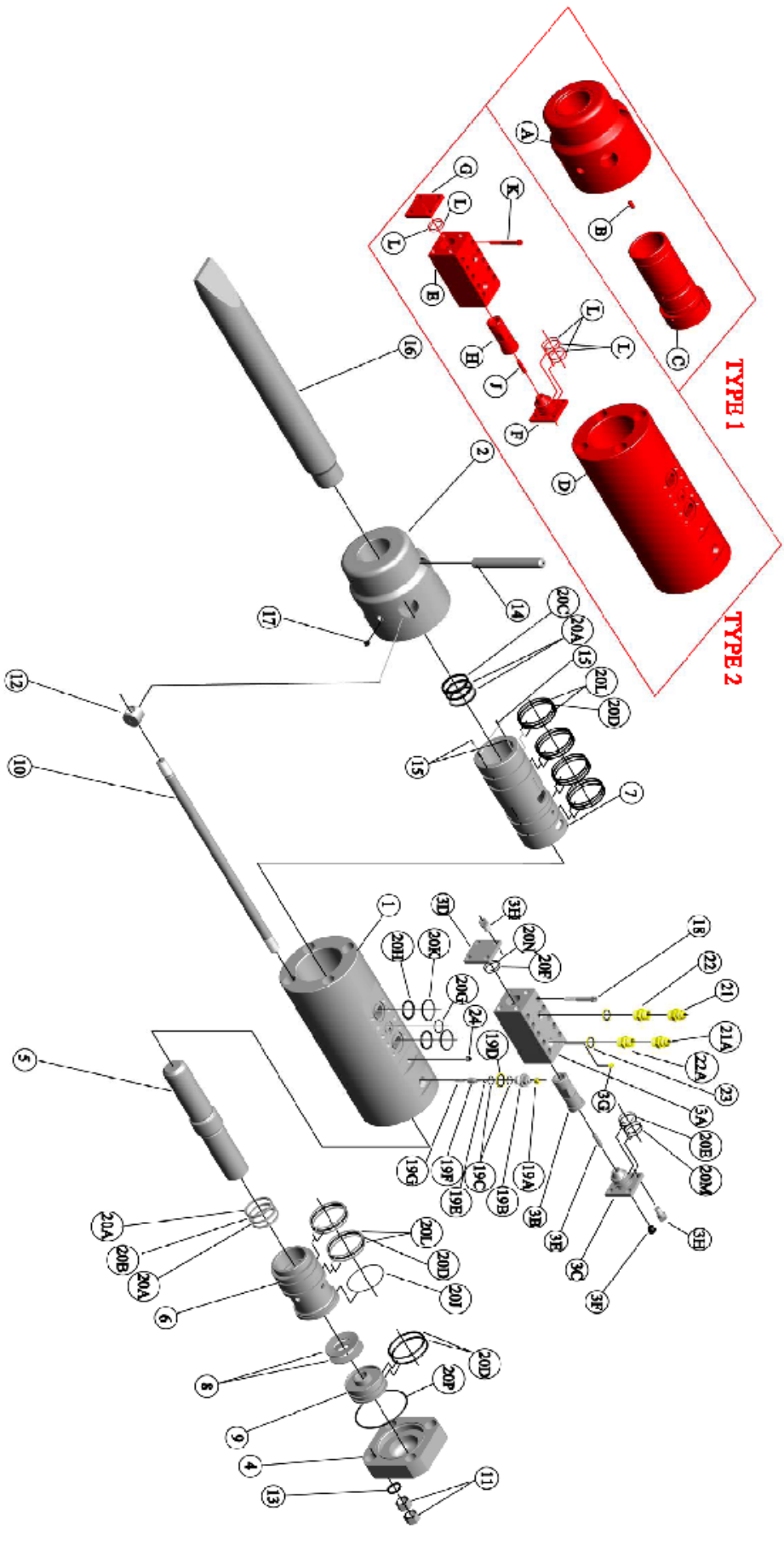
Item No.	Part No.	Description	Qty.
1	S100-001A	Main Body	1
2	S100-002A	Chuck Housing	1
3	S100-003AC	Main Valve Complete	1
3A	S100-003A	Valve Housing (Bare)	1
3B	S100-019A	Valve Spool	1
3C	S100-020A	Main Valve Top Plate	1
3D	S100-021A	Main Valve Bottom Plate	1
3E	S100-029A	Plunger	1
3F	ARC-003	18mm Pressure Plug	1
3G	ARC-100	8mm Pressure Plug	1
3H	ARC-007	Socket Head Capscrew (Top & Bottom Valve Plate)	8
4	S100-004	Cylinder Head	1
5	S100-006	Piston	1
6	S100-007	Upper Cylinder Liner	1
7	S100-008	Lower Cylinder Liner	1
8	S100-009	Disc Washers	2
9	S100-010	Spacer	1
10	S100-013	Tie Rod	4
11	S100-014A	Top Nut	8
12	S100-015	Bottom Nut	4
13	S100-063A	Tie Rod Washer	4
14	S100-017	Tool Retainer Pin	1
15	ARC-095	Dowel Pin	2
16A	S100-026P	Tool (Point )	1
16B	S100-026C	Tool (Chisel )	1
17	ARC-005	Grease Nipple	1
18	ARC-111	Socket Head Capscrew (Valve to Main Body)	10
19	ARC-008	Gas Valve Assembly	1
19A	ARC-008A	Gas Valve Dust Cap	1
19B	ARC-008B	Gas Valve Body	1
19C	ARC-008C	"O" Ring	2
19D	ARC-008D	1" Dowty Washer	1
19E	ARC-008E	"O" Ring	1
19F	ARC-008F	Gas Valve Shuttle	1
19G	ARC-008G	Gas Valve Spring	1
20	S100-059A	Seal Kit Complete	1
20A	S100-059-1	"U" Seal	4
20B	S100-059-2	"U" Seal Rubber Quad	1
20C	S100-059-3	Wiper Ring	1
20D	S100-059-4	"O" Ring Cylinder Liner	8
20E	S100-059-5A	"O" Ring Main Valve Top Plate	2
20F	S100-059-6A	"O" Ring Main Valve Bottom Plate	1
20G	S100-059-7	"O" Ring Valve to Main Body	1
20H	S100-059-8	"O" Ring Valve to Main Body	2
20J	S100-059-9	"O" Ring Upper Cylinder Liner	1
20K	S100-059-10A	P.T.F.E. Back Up Ring Valve to Main Body	2

<b>20L</b>	S100-059-11	P.T.F.E. Back Up Ring Cylinder Liner	12
<b>20M</b>	S100-059-12A	P.T.F.E. Back Up Ring Main Valve Top Plate	2
<b>20N</b>	S100-059-13A	P.T.F.E. Back Up Ring Main Valve Bottom Plate	1
<b>20P</b>	S100-059-14	"O" Ring Cylinder Head to Main Body Face Seal	1
<b>21</b>	ARC-028	Inlet Adaptor 3/4" BSP * 1.1/16 JIC - 12 Male Couplings	1
<b>21A</b>	ARC-028	Outlet Adaptor 3/4" BSP * 1.1/16 JIC - 12 Male Couplings	1
<b>22</b>	ARC-020	Inlet Adaptor 3/4" X 3/4 BSP Male Couplings	1
<b>22A</b>	ARC-020	Outlet Adaptor 3/4" X 3/4 BSP Male Couplings	1
<b>23</b>	ARC-009	3/4" Dowty Seal	2
<b>24</b>	ARC-002	1/4 "BSP Plug	1
<b>30</b>	S100-150	Hammer Box	1
<b>31</b>	S100-101	Lower Buffer	1
<b>32</b>	S100-100	Top Buffer	1
<b>33</b>	ARC-010	Rubber Doughnut	1
<b>34</b>	ARC-059	Top Bracket	1
<b>35</b>	ARC-013	Top Bracket Bolt Assembly	12
	ARC-120	Decal Set	1
	ARC-012	Gas Charging Kit	1
	S100-200	Operators/Parts Manual	1
	ARC-042	3/4" Nominal Bore Two Wire Hose with 1.1/16" JIC - 12 Fittings 2400mm	2
	ARC-035	3/4" Nominal Bore Two Wire Hose with 3/4" BSP Fittings 2400mm	2

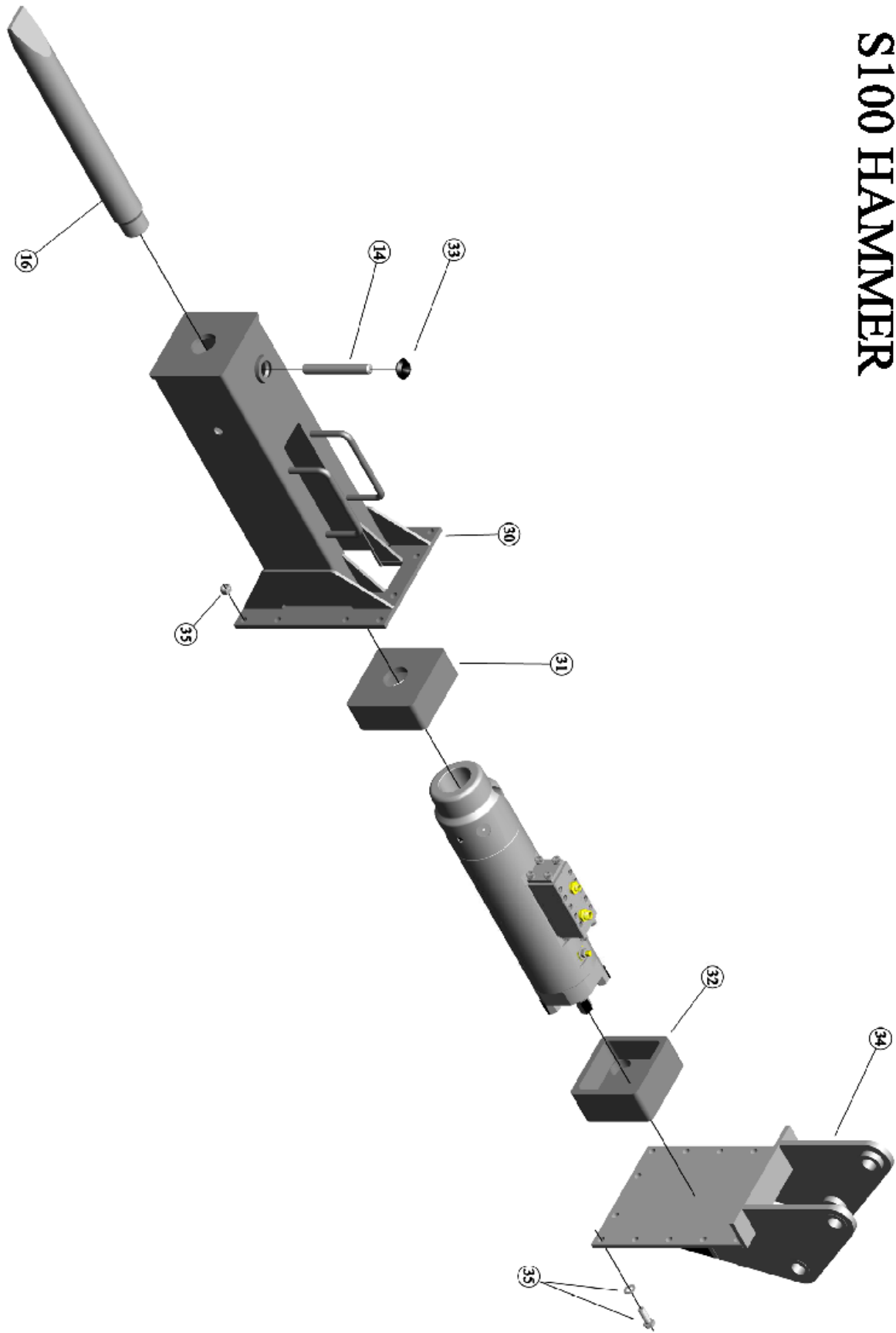
Item No.	Part No.	<b>TYPE 1</b>	
<b>A</b>	N/A	Item A has been replaced with Item No2 /S100-002A Chuck Housing Complete. Item No2 part No; S100-002A has Item No's; B & C as integral parts.	
<b>B</b>	N/A	Combination Bush	
<b>C</b>	N/A	Dowel Pin	

Item No.	Part No.	<b>TYPE 2 PRE OCTOBER 2008 SERIAL No; 100100801</b>	
<b>D</b>	S100-001	Main Body	
<b>E</b>	S100-003	Valve Housing (Bare)	1
<b>F</b>	S100-020	Main Valve Top Plate	1
<b>G</b>	S100-021	Main Valve Bottom Plate	1
<b>H</b>	S100-019	Valve Spool	1
<b>J</b>	S100-029	Plunger	1
<b>K</b>	ARC-006	Socket Head Capscrew (Valve to Main Body)	10
<b>L</b>	S100-059V	Main Valve Seal Kit	1

# S100 HAMMER



# S100 HAMMER



# GAS VALVE ASSEMBLY

